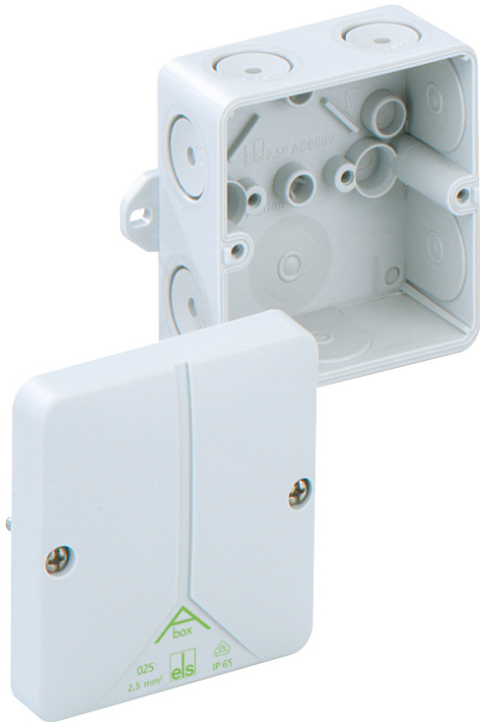


Junction box

Abox 025 AB-L



Abox 025 AB-L

Junction box

CUSTOMIZABLE

Productnumber: 80390701
Dimensions: 80 x 80 x 52 mm

Junction box acc. to DIN EN 60670 (VDE 0606),
Ui=690V, with self-sealing, soft inlet membranes,
M20, seal range 2 - 16 mm, with external fixing
lugs

Grey, without terminal



To industrial product:
<https://www.spelsberg.com/p/49490201>

Technical Data

electrical characteristics

Protection type UL:	not specified
Rated insulation voltage AC:	690 V
Type of protection:	IP65
Circuit integrity class:	none
Max. conductor cross section:	2,5 mm ²
Protection class:	II

Colours

Cover colour:	grey
---------------	------

Dimensions

Length:	80 mm
Width:	80 mm

Dimensions

Height:	52 mm
---------	-------

Material characteristics

suitable for exterior use:	no
Halogen free:	yes
Industry quality:	no

mechanical properties

Type of fastening:	Wall/ceiling mounting
Sealable:	yes
Cover screw torque:	1 Nm
Impact strength:	IK07

Ambient conditions

max. relative humidity 25°C:	95 %
max. relative humidity 40°C:	50 %
Min. ambient temperature:	-25
Max. ambient temperature:	40
24h ambient temperature:	35

Material

Base unit material:	Polystyrene
Cover material:	Polystyrene
Cover screw material:	Stainless steel V2A

Certificates

Test mark:	VDE
------------	-----

Accessories

KS M20 - Combi set

WST M20 - Twist plug

GMU PA M20 - Lock nut

WNI M20 - Twist nipple

SNI M20 - Stepped nipple

KVR M20-GDB/MGM/sw - Cable gland

KVR M20-MGM - Cable gland

KVR M20-GDB/MGM - Cable gland

AST M20 - Attachment bushes

VST M20 - Sealing plugs

KVR M20-GDB - Cable gland

DMS M20/sw - Double-membrane seals

DMS M20/w - M20, white

DMS M20 - Double-membrane seals

BST M20/sw - Ventilation seal

BST M20 - Ventilation seal

RST M20 - Conduit connector

Abox 025/040 KLS-2,5²/4² - Terminal block
